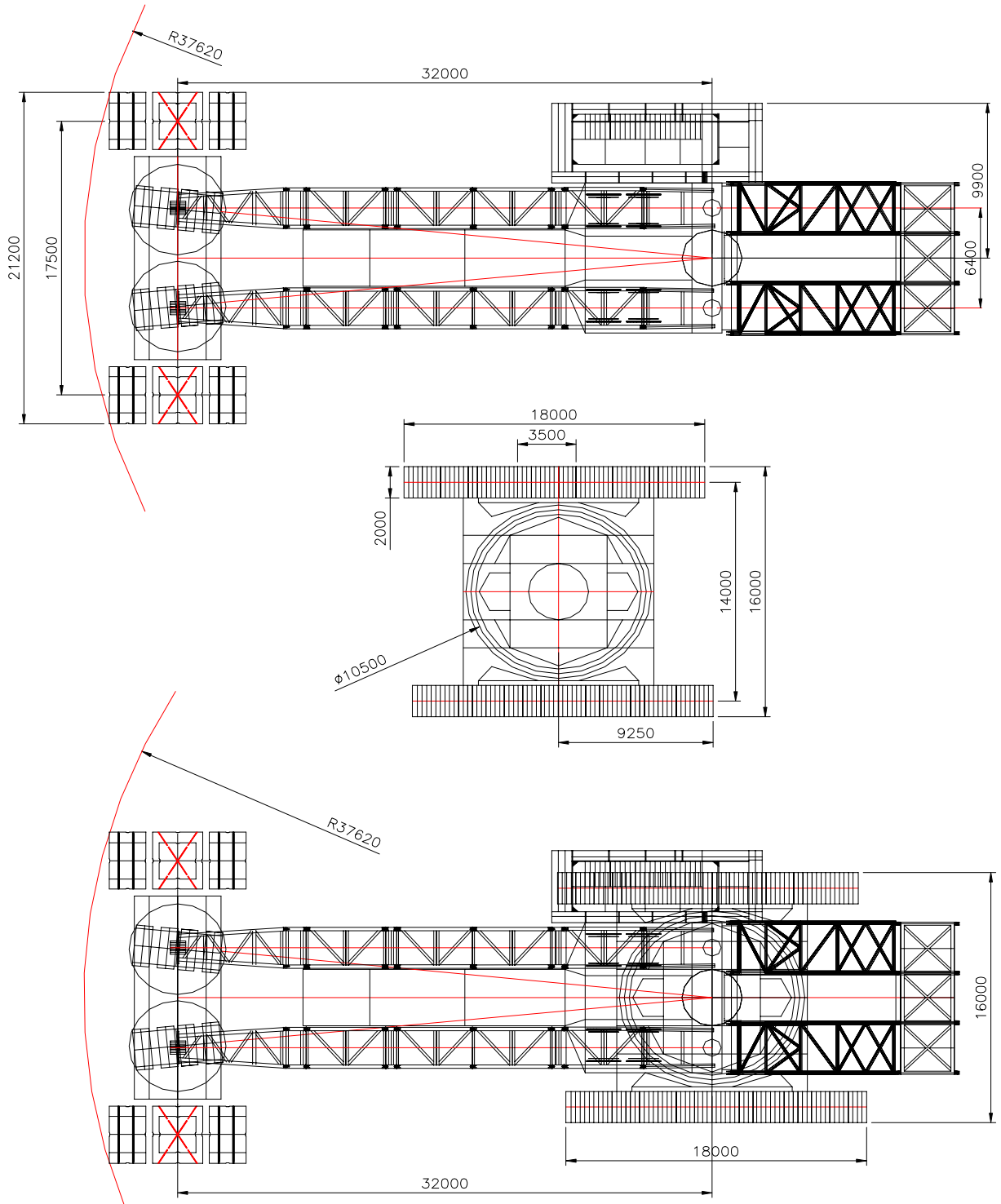


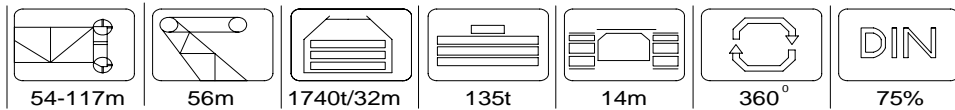
DEMAG CC 8800-1 TWIN

3200 Te



DEMAG CC 8800-1 TWIN

3200 Te



Configuration : SSL

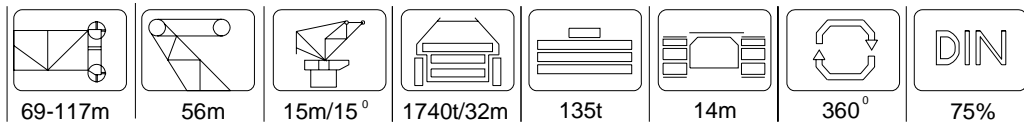
Radius	Boom Length (m)										Radius
m	54	69	75	81	87	93	99	105	111	117	m
9	3200.0										9
10	3200.0	2700.0									10
11	3200.0	2700.0	2695.0								11
12	3200.0	2698.0	2645.0	2613.0	2541.0	2459.0					12
13	3168.5	2656.5	2599.5	2569.5	2500.0	2425.0	2328.0				13
14	3137.0	2615.0	2554.0	2526.0	2459.0	2392.0	2301.0	2110.0	1988.0		14
15	2924.5	2568.0	2519.0	2489.5	2418.5	2359.0	2273.0	2110.0	1988.0	1865.0	15
16	2712.0	2521.0	2484.0	2453.0	2378.0	2326.0	2245.0	2110.0	1988.0	1865.0	16
18	2385.0	2323.0	2315.0	2307.0	2265.0	2208.0	2156.0	2104.0	1988.0	1865.0	18
20	2125.0	2070.0	2062.0	2053.0	2048.0	2031.0	1985.0	1939.0	1895.0	1851.0	20
22	1915.0	1863.0	1855.0	1847.0	1842.0	1834.0	1834.0	1796.0	1757.0	1717.0	22
24	1740.0	1692.0	1684.0	1676.0	1671.0	1663.0	1663.0	1656.0	1636.0	1599.0	24
26	1593.0	1548.0	1540.0	1532.0	1527.0	1519.0	1519.0	1512.0	1505.0	1495.0	26
28	1468.0	1425.0	1417.0	1409.0	1404.0	1396.0	1395.0	1389.0	1382.0	1378.0	28
30	1359.0	1319.0	1311.0	1303.0	1297.0	1290.0	1289.0	1283.0	1276.0	1272.0	30
34	1182.0	1145.0	1137.0	1129.0	1123.0	1115.0	1115.0	1109.0	1102.0	1098.0	34
38	993.0	1009.0	1001.0	992.0	987.0	979.0	978.0	972.0	965.0	961.0	38
42	840.0	899.0	891.0	882.0	877.0	869.0	868.0	861.0	854.0	850.0	42
46	732.0	810.0	801.0	792.0	786.0	778.0	777.0	771.0	764.0	759.0	46
50		735.0	726.0	717.0	711.0	702.0	701.0	695.0	688.0	683.0	50
54		672.0	662.0	653.0	647.0	638.0	637.0	630.0	623.0	619.0	54
58		618.0	608.0	599.0	592.0	583.0	582.0	575.0	568.0	563.0	58
62			562.0	552.0	545.0	536.0	534.0	527.0	520.0	515.0	62
66			522.0	511.0	504.0	494.0	492.0	485.0	478.0	473.0	66
70				476.0	468.0	458.0	455.0	448.0	441.0	436.0	70
74					436.0	426.0	423.0	415.0	408.0	403.0	74
78						398.0	394.0	386.0	379.0	373.0	78
82							373.0	368.0	360.0	353.0	82
86								345.0	337.0	329.0	86
90									316.0	308.0	90
94										289.0	94
98										271.0	98
102											102

Remarks:-

In some instances 6 hoist winches are necessary

DEMAG CC 8800-1 TWIN

3200 Te



Configuration : SFVL

Radius	Boom Length (m)									Radius
m	69.0	75.0	81.0	87.0	93.0	99.0	105.0	111.0	117.0	m
16	1917.0									16
17	1874.0	1911.0	1919.0							17
18	1830.0	1867.0	1879.0	1886.0						18
19	1788.5	1824.0	1841.5	1847.0	1874.0	1887.0				19
20	1747.0	1781.0	1804.0	1807.0	1836.0	1819.0	1776.0	1704.0		20
21	1707.5	1744.5	1770.0	1767.5	1778.5	1751.0	1710.5	1671.0	1508.0	21
22	1668.0	1708.0	1736.0	1728.0	1721.0	1683.0	1645.0	1609.0	1480.0	22
24	1596.0	1633.0	1638.0	1629.0	1599.0	1564.0	1529.0	1497.0	1424.0	24
26	1508.0	1499.0	1490.0	1481.0	1471.0	1459.0	1427.0	1397.0	1365.0	26
28	1382.0	1373.0	1363.0	1354.0	1345.0	1337.0	1327.0	1308.0	1278.0	28
30	1273.0	1264.0	1254.0	1245.0	1235.0	1227.0	1218.0	1210.0	1200.0	30
34	1095.0	1085.0	1076.0	1066.0	1056.0	1048.0	1038.0	1030.0	1020.0	34
38	955.0	945.0	935.0	926.0	916.0	907.0	898.0	889.0	879.0	38
42	842.0	832.0	822.0	813.0	802.0	794.0	784.0	775.0	765.0	42
46	750.0	740.0	729.0	720.0	709.0	701.0	691.0	682.0	671.0	46
50	672.0	662.0	652.0	642.0	631.0	623.0	613.0	604.0	593.0	50
54	607.0	597.0	586.0	576.0	565.0	557.0	546.0	538.0	527.0	54
58	551.0	540.0	530.0	520.0	509.0	500.0	490.0	481.0	470.0	58
62	503.0	492.0	481.0	471.0	460.0	451.0	441.0	431.0	418.0	62
66	461.0	450.0	439.0	428.0	417.0	408.0	396.0	385.0	372.0	66
70	424.0	413.0	402.0	391.0	379.0	368.0	356.0	345.0	332.0	70
74	392.0	381.0	369.0	357.0	343.0	333.0	320.0	309.0	296.0	74
78		352.0	339.0	326.0	312.0	301.0	289.0	277.0	264.0	78
82			312.0	299.0	285.0	273.0	260.0	249.0	236.0	82
86			289.0	275.0	260.0	248.0	235.0	224.0	210.0	86
90				253.0	238.0	226.0	213.0	201.0	188.0	90
94					219.0	207.0	193.0	181.0	167.0	94
97						193.0	179.5	167.5	153.0	97
98						189.0	175.0	163.0		98
101						177.7	163.0	150.0		101
102						174.0	159.0			102
104							152.0			104
106										106

Remarks:-

In some instances 6 hoist winches are necessary